

# Superstructure Alpenblick, Müntschemier

2019



The Alpenblick development in Müntschemier is an attractive residential property with a high quality of living. Timbatec supported the architects in particular with the parapets in timber construction and the fire protection.

## The project

The municipality of Müntschemier is located in the Bernese Seeland - about 20 minutes from the cities of Bern, Biel and Neuchâtel. Young and old alike will find a suitable home in the new development, which consists of apartment buildings as well as terraced single-family houses with different levels of space. Attics in timber construction are located on all six massive structures. Timbatec accompanied the architects as timber construction engineer for the housing development. We solved the details of statics and fire protection.

## The construction

The walls of the attic floors are of timber frame construction. Above this is a flat roof construction made of hollow box elements. This type of construction was chosen in particular because of the light weight of wood. The top floor of each of the terraced single-family houses is also wooden. Timbatec also planned the prescribed fire-section-forming apartment partition walls in timber frame construction.

## The challenge

Special attention was paid to the large canopies with the light openings. Timbatec designed them to be as slim as possible.



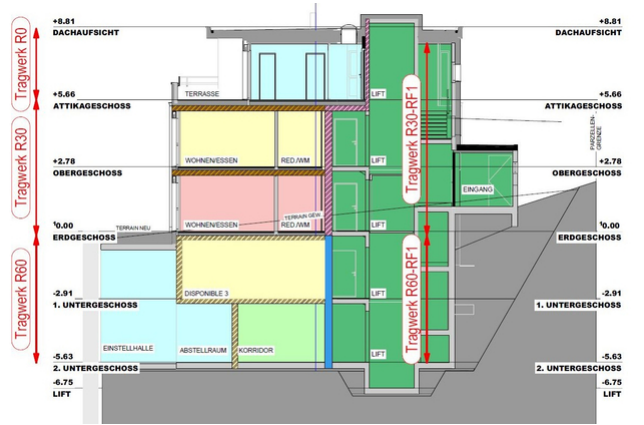
Exterior view finished superstructure



Interior view apartment



Soffit canopy



Section with the different fire sections

### Construction Data

- Wood frame construction

### Services of Timbatec

- SIA Phase 31 Preliminary design
- SIA Phase 32 Construction project
- SIA Phase 41 Tendering and comparison of offers
- SIA Phase 51 Implementation project
- SIA Phase 52 Execution
- Statics and construction
- Fire protection planning
- Fire protection Quality assurance QSS1
- cost estimation
- Technical site supervision and site inspections

### Architect

Rolf and Therese Messner 3234 Vinelz

### Client

Immoos AG 3225 Müntschemir

### Timber construction engineer

Timbatec Holzbauingenieure Schweiz AG 3012 Bern

### Timber construction

K. Helfer Holzbau AG 3225 Müntschemier